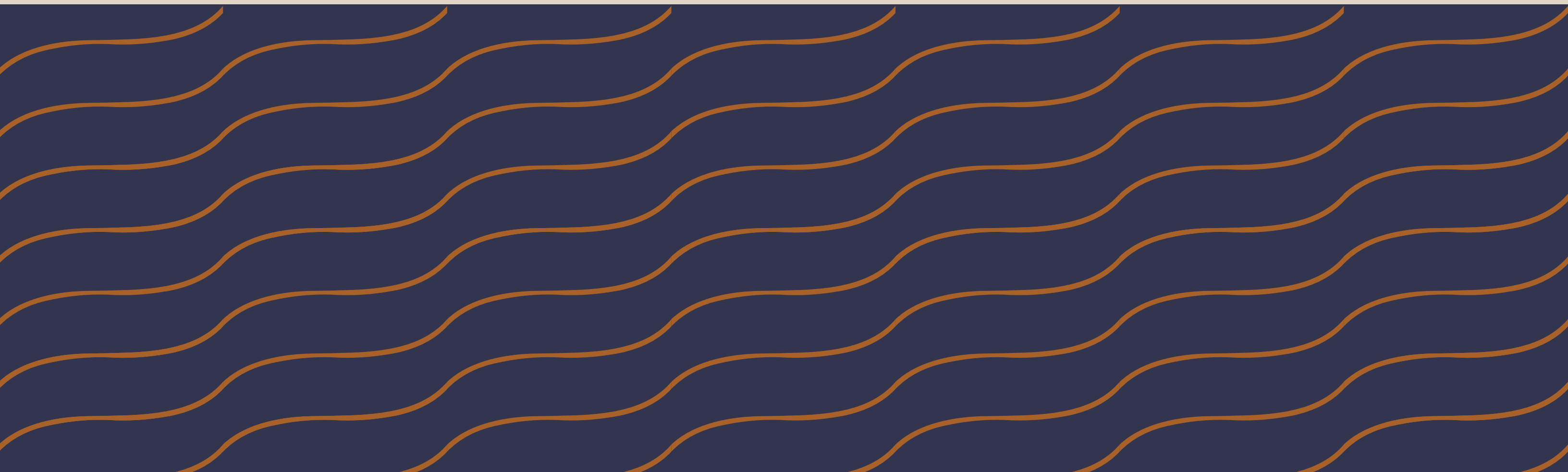


# PHILOS

ARQ



# ABOUT PHILOS

P

«Philos» translates to love for what we create.

It's doing things with **passion**, falling in love with the process until we achieve the **best result**.

We see architecture as **a place of connection between the soul of our clients and the space they inhabit**. We seek constant dialogue between what is inside and what lives outside.

A complete architecture that enhances everything that surrounds it.

We explore **elegance** from a perspective where it doesn't lose its warmth or the touch of the sea. Based on concepts such as organicity and **attention to detail** to maintain a high-end style.

TAMARINDO

GUANACASTE

COSTA RICA

P

# PANGA

## TAMARINDO PRESERVE

2021

P.19



# PANGA

RESIDENTIAL TAMARINDO PRESERVE

TAMARINDO BEACH

4-BEDROOM PERSONAL HOME

TOTAL AREA: 665 M<sup>2</sup>













# PHILOS

ARQ

HERMOSA BEACH

GUANACASTE

COSTA RICA

P

# BELLA MONTE BELLO



# BELLA

RESIDENTIAL MONTE BELLO

HERMOSA BEACH

4-BEDROOM PERSONAL HOME

TOTAL AREA: 560 M<sup>2</sup>













PLAYA GRANDE

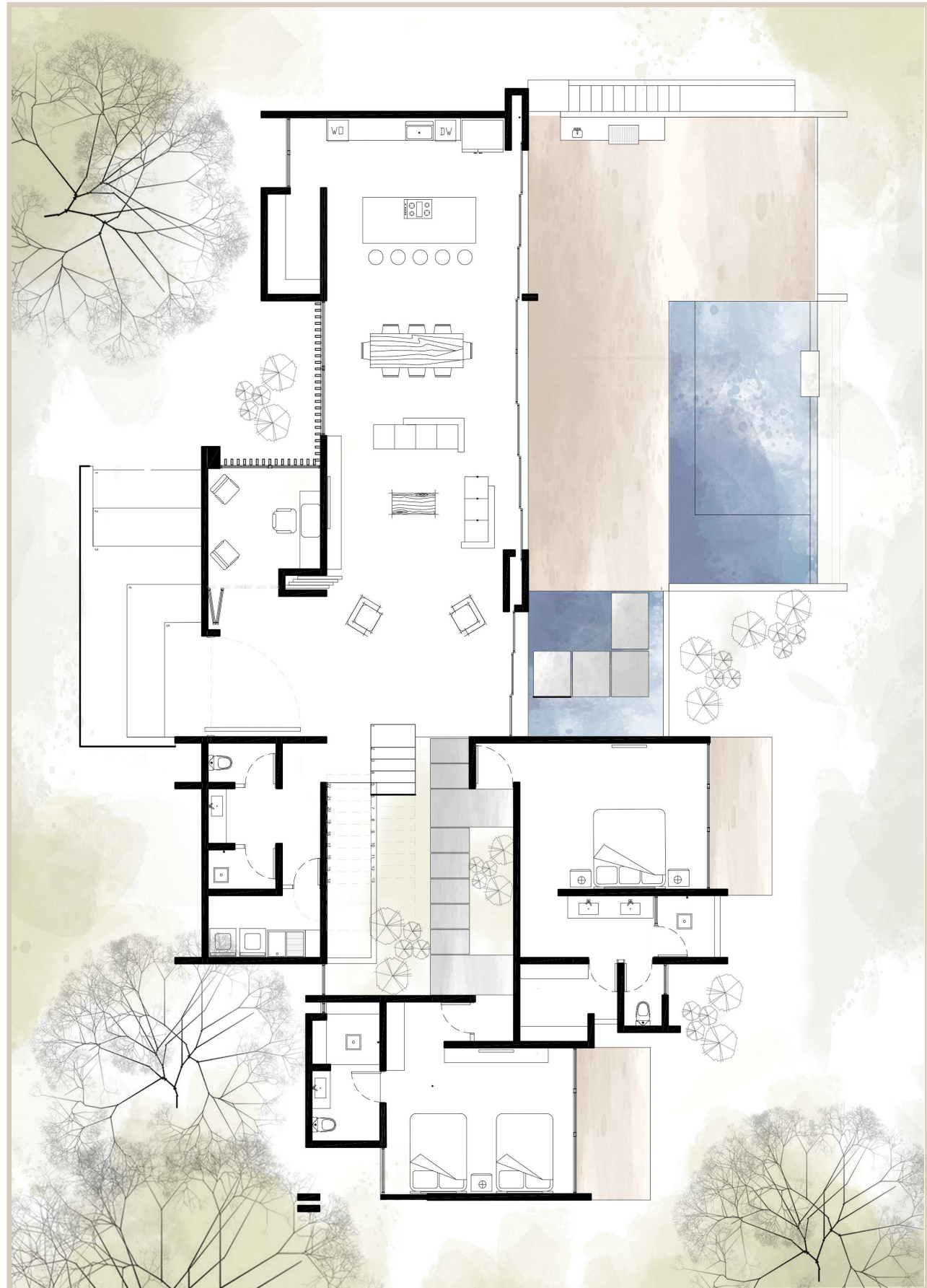
GUANACASTE

COSTA RICA

P

# NETCO

## CORONA DEL CABO



# NETCO

CORONA DEL CABO

PLAYA GRANDE

4-BEDROOM PERSONAL HOME

TOTAL AREA: 480 M<sup>2</sup>







P







# PHILOS

ARQ



TAMARINDO

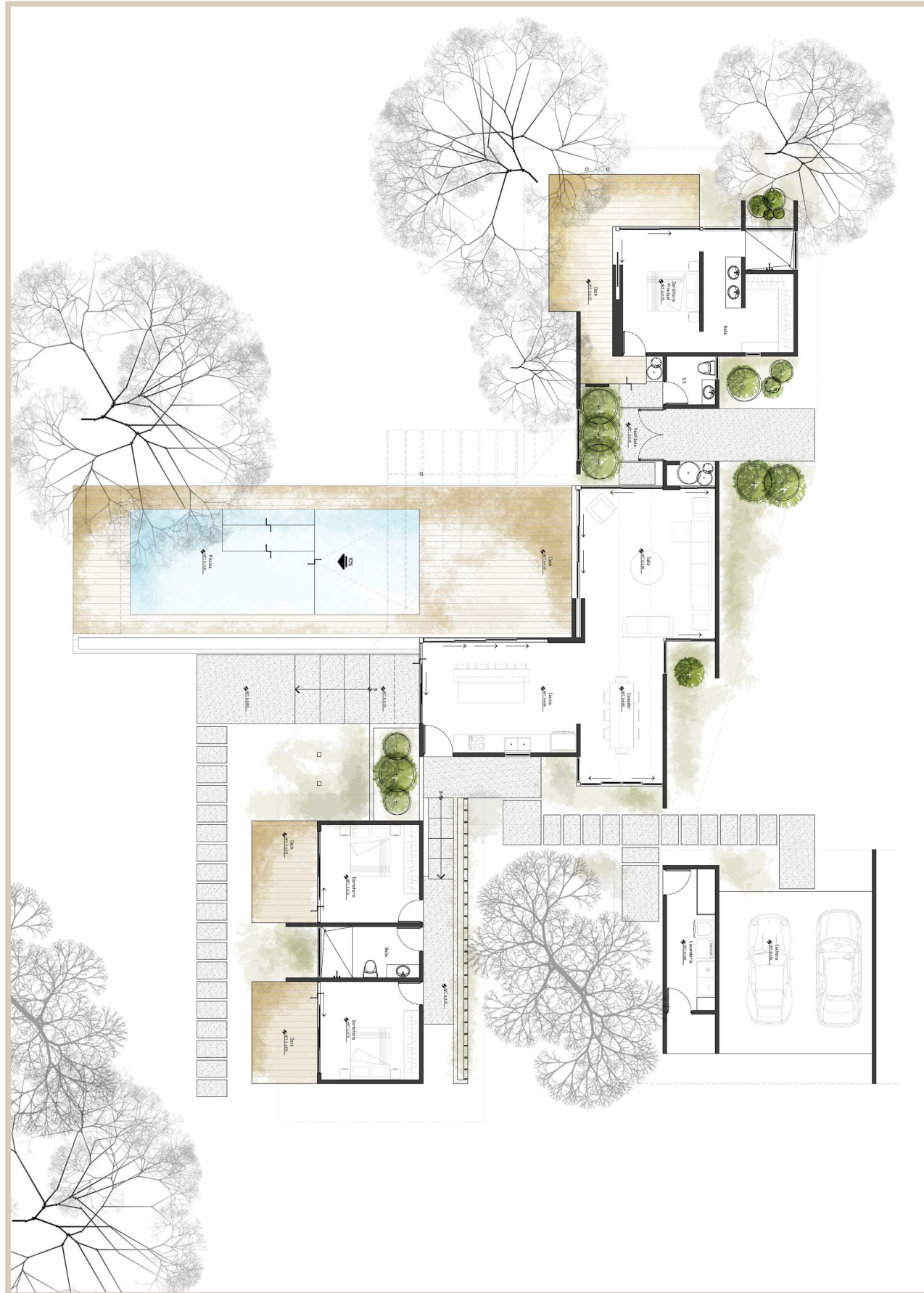
GUANACASTE

COSTA RICA

P

# LECLERC

## TAMARINDO BEACH



# LECLERC

RESIDENTIAL BLACK STALLION

TAMARINDO BEACH

3-BEDROOM PERSONAL HOME

TOTAL AREA: 368 M<sup>2</sup>

















POTRERO

GUANACASTE

COSTA RICA

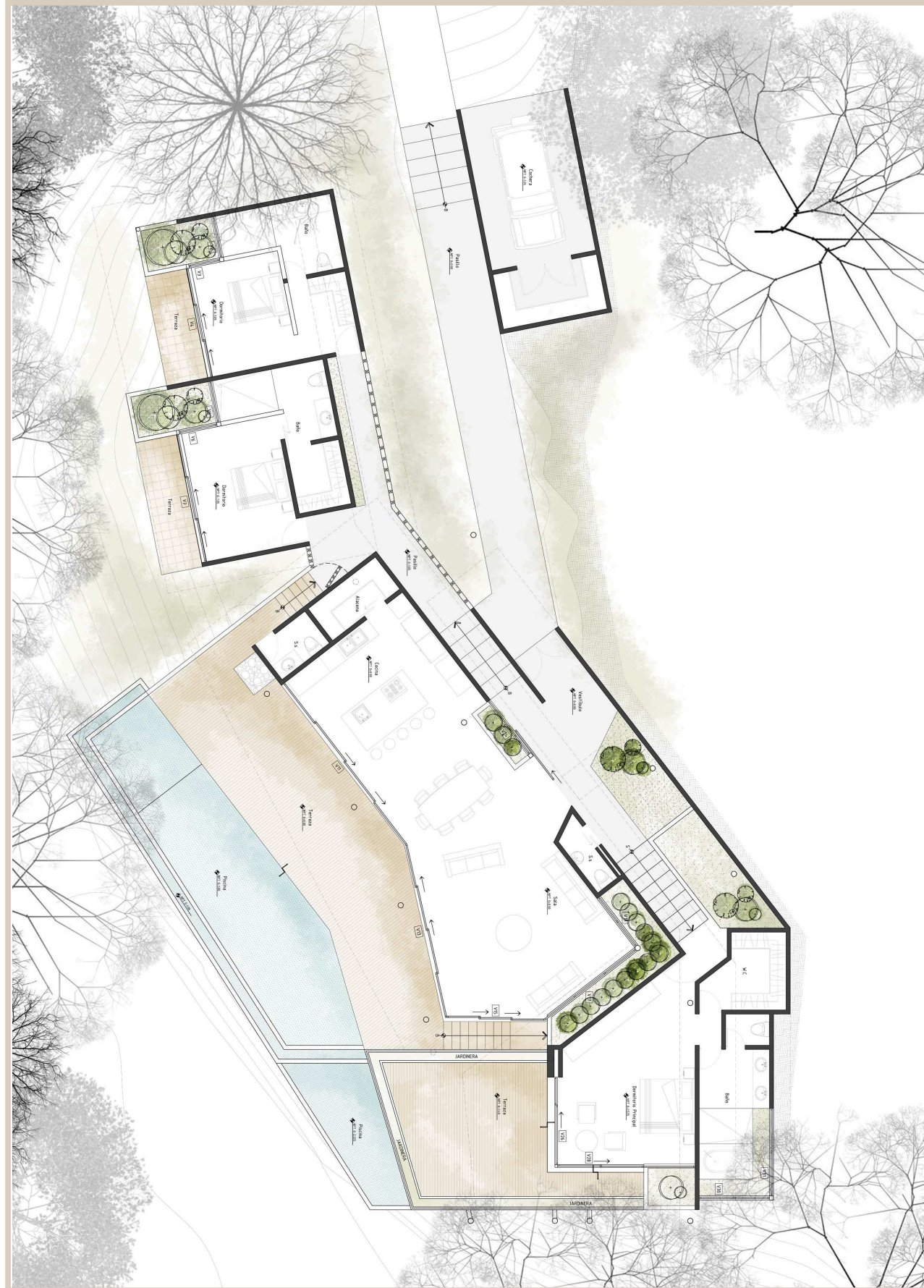
P

# VANDEBULCKE

## POTRERO BEACH

2021

P.12



# VANDEBULCKE

RESIDENTIAL DIVINE RETREATS

POTRERO BEACH

3-BEDROOM PERSONAL HOME

TOTAL AREA: 676 M<sup>2</sup>













# MDL. A1

## GUANACASTE



P

# MDL. A1

GUANACASTE

3-BEDROOMS SPEC HOME

TOTAL AREA: 175 M<sup>2</sup>











HERMOSA BEACH

GUANACASTE

COSTA RICA

P

# COSTA

## HERMOSA BEACH





P

# COSTA

RESIDENTIAL MAR VISTA

HERMOSA BEACH

4-BEDROOM + STUDIO PERSONAL HOME

TOTAL AREA: 730 M<sup>2</sup>























MATAPALO

GUANACASTE

COSTA RICA

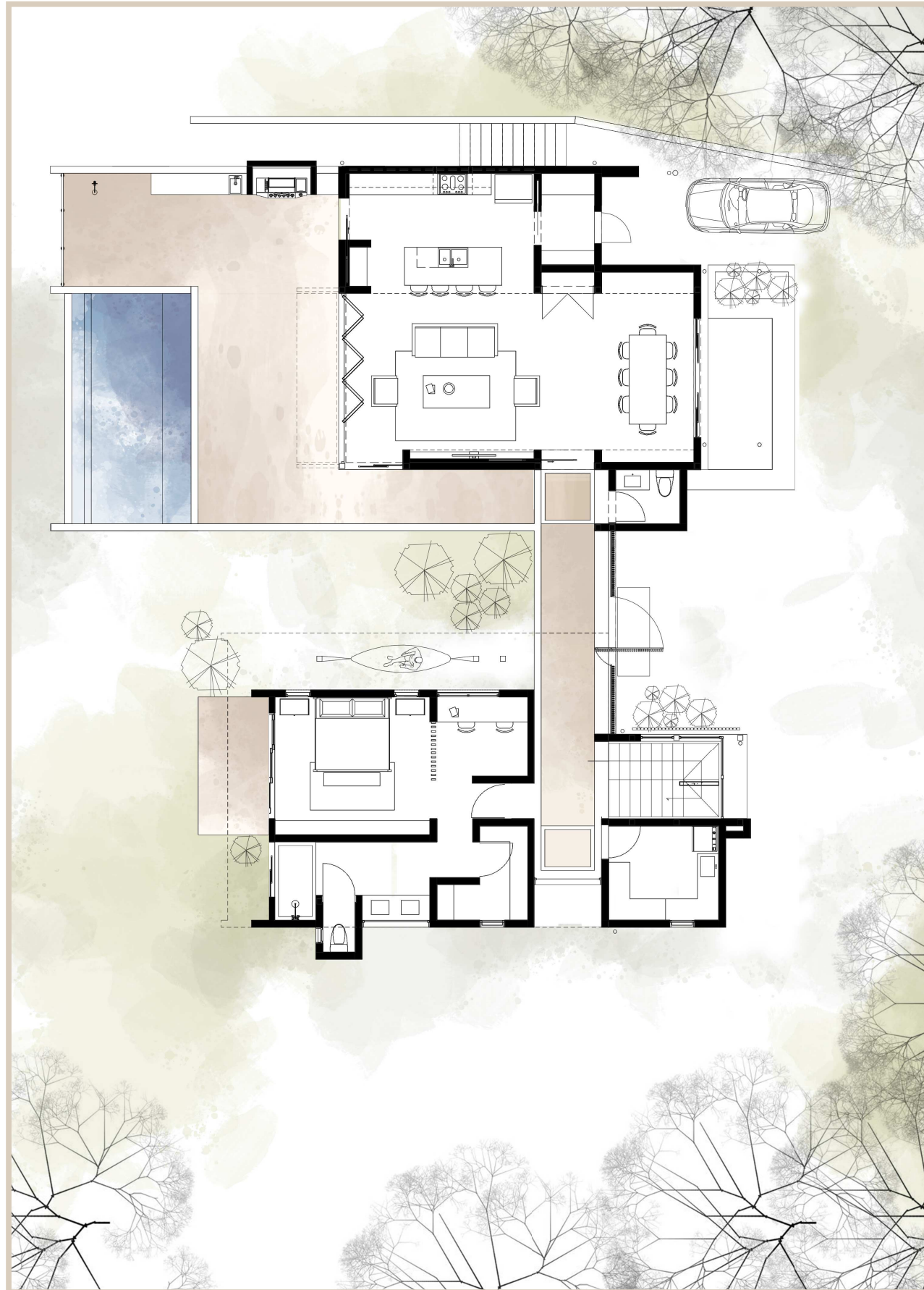
P

# SHARP

## LOMAS DEL MAR

2021

P.45



# SHARP

RESIDENTIAL LOMAS DEL MAR

MATAPALO BEACH

3-BEDROOM PERSONAL HOME

TOTAL AREA: 332 M<sup>2</sup>


















# PHILOS

ARQ

 @PHILOSARQ

 DC@PHILOSARQ.COM | NH@PHILOSARQ.COM

 +(506) 8744-8787 | +(506) 8424-0331

 TAMARINDO, SANTA CRUZ, GUANACASTE, COSTA RICA